

ARTHÈ

ARCHITECTURE



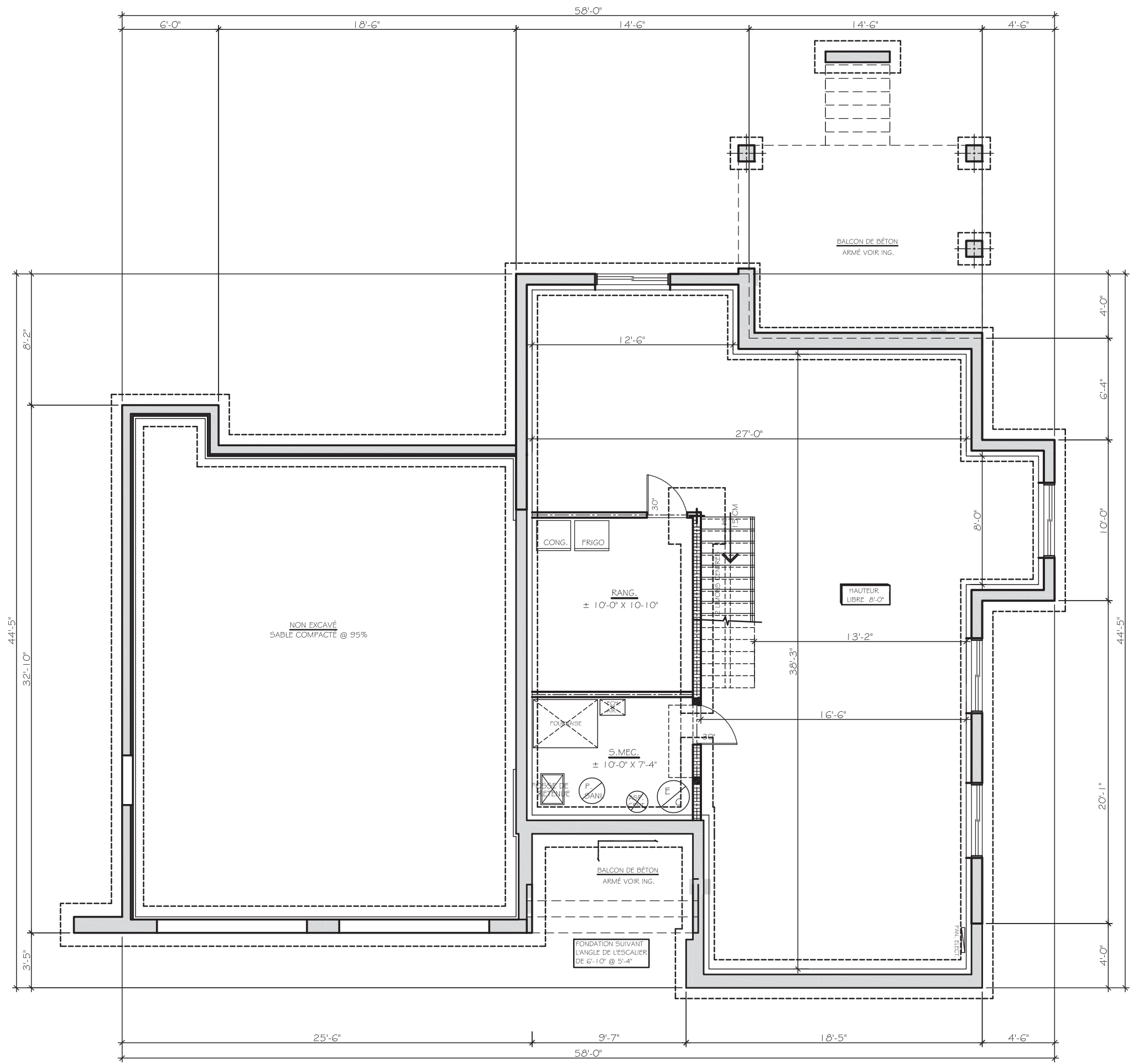
KASPER.21



DIX-9

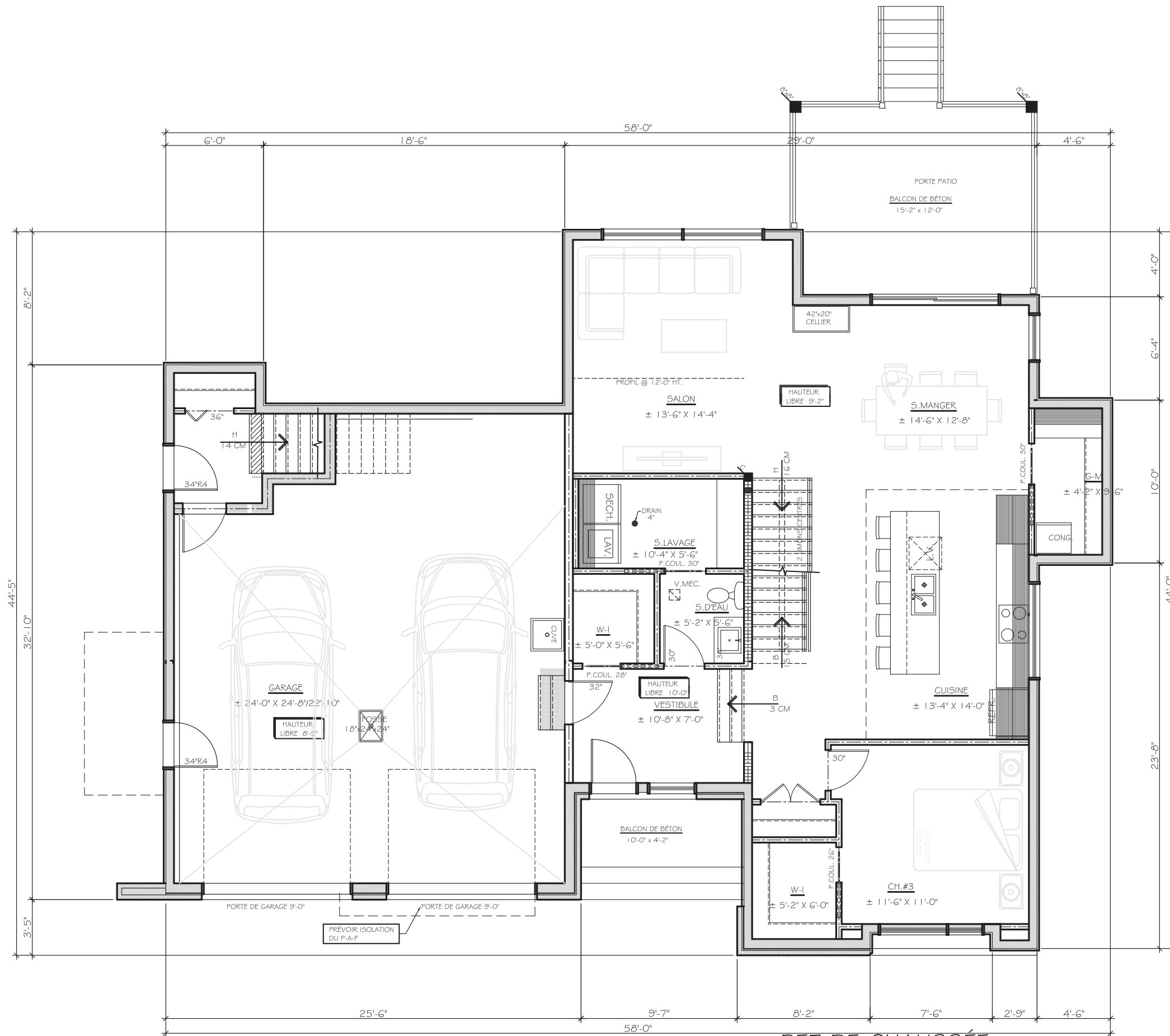
KASPER.21

ARTHÈ | ARCHITECTURE



FONDATION

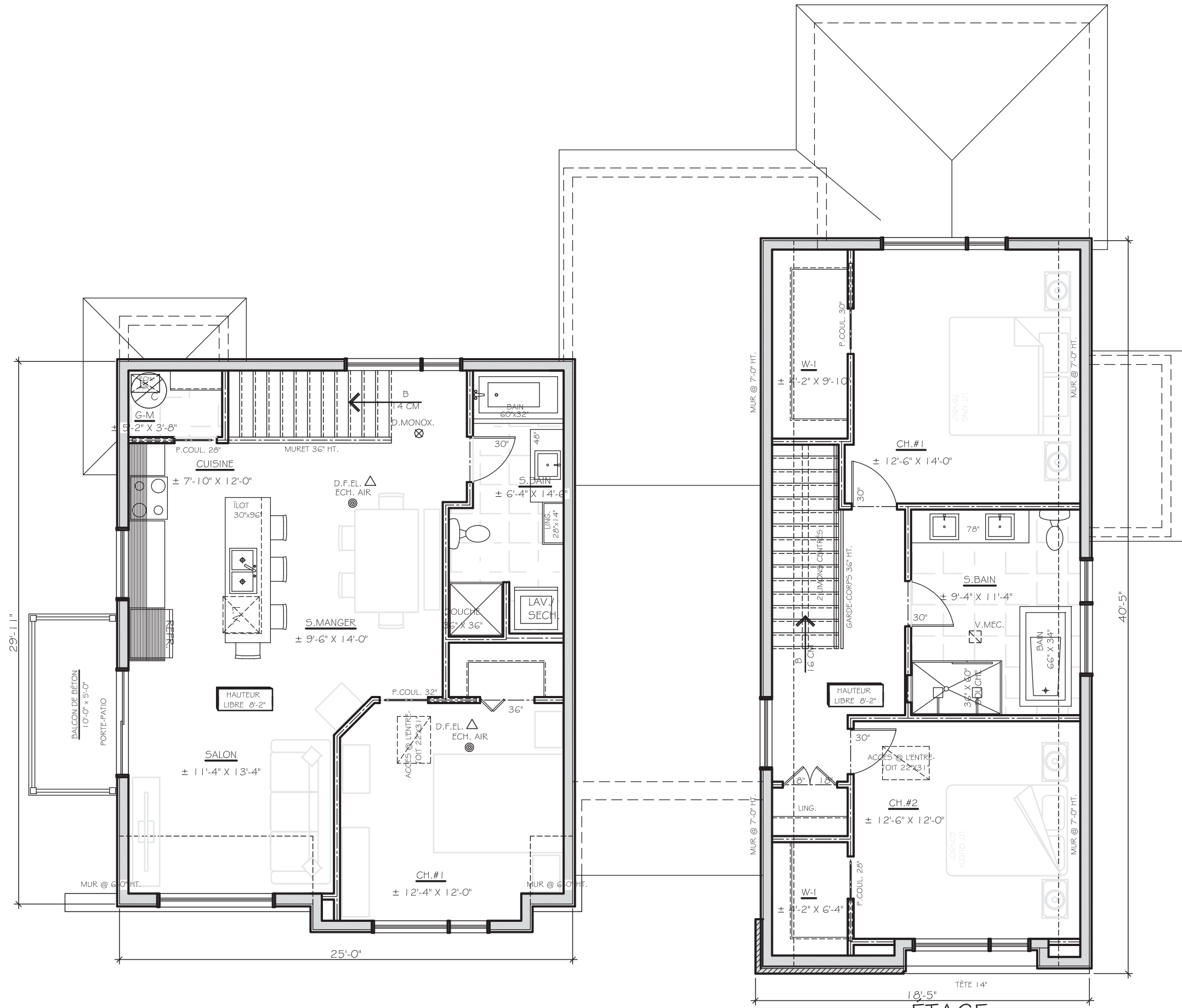




REZ-DE-CHAUSSÉE

SUP. RDC: ± 1136 pl.ca.
 GARAGE: ± 666 pl.ca.
 ACCÈS LOGEMENT: ± 84 pl.ca.





ÉTAGE

SUP. ÉTAGE: ± 690 p1.ca.
 SUP. LOGEMENT: ± 767 p1.ca.